

DEPARTMENT OF THE ARMY TECHNICAL MANUAL

**DIRECT SUPPORT AND GENERAL SUPPORT MAINTENANCE
REPAIR PARTS AND SPECIAL TOOLS LISTS (INCLUDING
DEPOT MAINTENANCE REPAIR PARTS AND SPECIAL TOOLS)
TEST SET, ELECTRON TUBE TV-13A/U
FSN 5625-753-2294**

**Headquarters, Department of the Army, Washington, D.C.
15 August 1973**

Current as of January 1973

	Paragraph	Page
Section I. INTRODUCTION		
Scope	1-1	2
General	1-2	2
Explanation of columns	1-3	2
Special information	1-4	4
Location of repair parts.	1-5	4
Abbreviations (Not applicable).	1-6	4
Reporting of equipment publication improvements	1-7	4
II. REPAIR PARTS LIST		6
III. SPECIAL TOOLS, TEST AND SUPPORT EQUIPMENT (Not applicable)		
IV. INDEX - FEDERAL STOCK NUMBER AND REFERENCE NUMBER CROSS-REFERENCE TO FIGURE AND ITEM NUMBER		15

*This manual supersedes TM 11-6625-404-35P, 26 March 1962, including all changes.

SECTION I

INTRODUCTION

1-1. Scope

This manual lists repair parts and special tools required for the performance of direct support, general support, and depot maintenance of the TV-13A/U. The PCCN for the TV-13A/U is GTEABU for all models.

1-2. General

This repair parts and special tools list is divided into the following sections:

a. Repair Parts List—Section II. A list of repair parts authorized for the performance of maintenance at the direct support, general support, and depot level. This repair parts list is arranged in alphabetical order.

b. Special Tools, Test and Support Equipment—Section III. Not applicable.

c. Index—Federal Stock Number and Reference Number Cross-Reference to Figure and Item Number—Section IV. A list, in ascending numerical sequence, of all Federal stock numbers appearing in the listings, followed by a list, in alphabetic sequence, of all reference numbers appearing in the listings. Federal stock number and reference numbers are cross-referenced to each illustration figure and item number or reference designation appearance.

1-3. Explanation of Columns

The following provides an explanation of columns found in the tabular list.

a. Source; Maintenance, and Recoverability Codes (SMR).

(1) *Source code.* Indicates the manner of acquiring support items for maintenance, repair, or overhaul of end items. Source codes are—

Explanation

- PA— Item procured and stocked for anticipated or known usage.
- PB— Item procured and stocked for insurance purposes because essentiality dictates that a minimum quantity be available in the supply systems.
- PC— Item procured and stocked and which otherwise would be coded PA except that it is deteriorative in nature.
- PD— Support item, excluding support equipment, procured for initial issue or outfitting stocked only for subsequent or additional initial issues or outfittings. Not subject to automatic replenishment.
- PE— Support equipment procured and stocked for initial issue or outfitting to specified main-

Code

- PF— Support equipment which will not be stocked but which will be centrally procured on demand.
- PG— Item procured and stocked to provide for sustained support for the life of the equipment. It is applied to an item peculiar to the equipment which because of probable discontinuance or shutdown of production facilities would prove uneconomical to reproduce at a later time.
- KD— An item of depot overhaul/repair kit and not purchased separately. Depot kit defined as a kit that provides items required at the time of overhaul or repair.
- KF— An item of a maintenance kit and not purchased separately. Maintenance kit defined as a kit that provides an item that can be replaced at organizational or direct support or general support levels of maintenance.
- KB— Item included in both a depot overhaul/repair kit and a maintenance kit.
- MO— Item to be manufactured or fabricated at organizational level.
- MF— Item to be manufactured or fabricated at direct support maintenance level.
- MH— Item to be manufactured or fabricated at general support maintenance level.
- MD— Item to be manufactured or fabricated at depot maintenance level.
- AO— Item to be assembled at organizational level.
- AF— Item to be assembled at direct support maintenance level.
- AH— Item to be assembled at general support maintenance level.
- AD— Item to be assembled at depot maintenance level.
- XA— Item is not procured or stocked because the requirements for the item will result in the replacement of the next higher assembly.
- XB— Item is not procured or stocked. If not available through salvage, requisition.
- XC— Installation drawing, diagram instruction sheet, field service drawing, that is identified by manufacturers' part number.
- XD— Support items can be requisitioned with justification.

NOTE

Cannibalization or salvage may be used as a source of supply for any items source

coded above except those coded XA and aircraft support items as restricted by AR 700-42.

(2) Maintenance code. Maintenance codes are assigned to indicate the levels of maintenance authorized to USE and REPAIR support items. The maintenance codes are entered in the third and fourth positions of the Uniform SMR Code Format as follows-

(a) Use (third *position*). The maintenance code entered in the third position indicates the lowest maintenance level authorized to remove, replace, and use the support item. The maintenance code entered in the third position indicates one of the following levels of maintenance.

Code	<i>Application/Explanation</i>
O -	Support item is removed, replaced, used at the organizational level of maintenance.

NOTE

A code "C" may be used in this position to denote crew or operator maintenance performed within organizational maintenance.

- F - Support item is removed, replaced, used at the direct support maintenance level.
- H - Support item is removed, replaced, used at the general support maintenance.
- D- Support items that are removed, replaced, used at depot only.

(b) Repair (fourth position). The maintenance code entered in the fourth position indicates whether the item is to be repaired and identifies the lowest maintenance level with the capability to perform complete repair (i.e., all authorized maintenance functions). When a maintenance code is not used a dash (-) sign is entered. For multi-service equipment/systems or when a code is entered, this position will contain one of the following maintenance codes as assigned by the service(s) that require the code-

Application/Explanation

- O- The lowest maintenance level capable of complete repair of the support item is the organizational level.
 - F - The lowest maintenance level capable of complete repair of the support item is direct support.
- The lowest maintenance level capable of complete repair of the support item is general

<i>Code</i>	<i>Application/Explanation</i>
	<i>support.</i>
D	The lowest maintenance level capable of complete repair of the support item is the depot level.
L- Repair	restricted to designated Specialized Repair Activity.
Z-	Non-repairable.: No repair is authorized.
B-	No repair is authorized. The item may be reconditioned by adjusting, lubricating, etc., at the user level. No parts or special tools are procured for the maintenance of this item.

(3) Recoverability code. Recoverability codes are assigned to support items to indicate the disposition action on unserviceable items. The recoverability code is entered in the fifth position of the uniform SMR Code Format as follows-

<i>Code</i>	<i>Explanation</i>
Z -	Nonrepairable item. When unserviceable, condemn and dispose at the level indicated in the first digit of the maintenance code.
O-	Repairable item, When uneconomically repairable; condemn and dispose at organizational level.
F -	Repairable item. When uneconomically repairable, condemn and dispose at the direct support level.
H-	Repairable item. When uneconomically repairable, condemn and dispose at the general support level.
D-	Repairable item. When beyond lower level repair capability, return to depot. Condemnation and disposal not authorized below depot level.
L-	Repairable item. Repair, condemnation, and disposal not authorized below depot/Specialized Repair Activity level.
A -	Item requires special handling or condemnation procedures because of specific reasons (i.e., precious metal content, high dollar value, critical material or hazardous material).

b. Federal Stock Number. Indicates the Federal stock number assigned to the item will be used for requisitioning purposes.

c. Description Indicates the Federal item name and a minimum description required to identify the item. The last line indicates the reference number followed by the applicable Federal Supply Code for Manufacturer (FSCM) in parentheses. The FSCM is used as an element in item identification to designate manufacturer or distributor or Govern-

ment agency, etc., and is identified in SB 708-42.

d. *Unit of Measure (U/M)*. Indicates the standard or basic quantity by which the listed item is used in performing the actual maintenance function. This measure is expressed by a two-character alphabetical abbreviation; e.g., ea, in, pr, etc., and is the basis used to indicate quantities and allowances in subsequent columns. When the unit of measure differs from the unit of issue, the lowest unit of issue that will satisfy the required units of measure will be requisitioned.

e. *Quantity Incorporated in Unit*. This column indicates the quantity of the item used in the equipment. Subsequent appearances of the same item in the same assembly are indicated by the letters "REF".

f. *30-Day DS/GS Maintenance Allowances*.

NOTE

Allowances in GS column are for GS maintenance only.

(1) The repair parts indicated by asterisk entries in separate allowance columns for DS and GS represent those authorized for use at that category of maintenance to be requisitioned on an "as required" basis, until stockage is based on demand in accordance with AR 710-2.

(2) Allowance quantities are indicated in the special tool lists section for special tools, TMDE, and other support equipment.

g. *1-Year Allowances Per 100 Equipments/Contingency Planning Purposes*. Column intentionally left blank.

h. *Depot Maintenance Allowance Per 100 Equipments*. This column indicates opposite the first appearance of each item the total quantity authorized for depot maintenance of 100 equipments.

i. *Illustration*. This column is divided as follows:

(1) *Figure number*. Indicates the figure number of the illustration on which the item is shown in TM 11-6625-404-35.

(2) *Item number*. Indicates the item number or reference designation used to reference the item in the illustration.

1-4. Special Information

a. Usable on codes are included in column 3. Uncoded items are applicable to all models. Identification of the usable on codes used in this publication are—

<i>Code</i>	<i>Used on</i>
AMS	TV-13A/U

b. The following publications pertain to the TV-

13A/U and its components:

- TM 11-6625-404-12 Operator and Organizational Maintenance Manual: Test Set, Electron Tube TV-13A/U.
- TM 11-6625-404-20P Organizational Maintenance Repair Parts and Special Tools Lists: Test Set, Electron Tube TV-13A/U.
- TM 11-6625-404-35 Field and Depot Maintenance Manual: Test Set.

1-5. Location of Repair Parts

a. This manual contains one cross-reference index (sec IV) to be used to locate a repair part when either the Federal stock number or reference number (manufacturer's part number) is known. The first column in the index is prepared in numerical or alphanumeric sequence in ascending order. The reference numbers (manufacturer's part numbers) are listed immediately following the last listed Federal stock number in the index of Federal stock numbers.

b. When the Federal stock or reference number is known, follow the procedures given in (1) and (2) below.

(1) Refer to the index of Federal stock numbers (sec IV) and locate the Federal stock number or reference number. The FSN and reference number are cross-referenced to the applicable figure and item number or reference designation.

(2) Refer to the repair parts list (sec II) and locate the figure number (col 10a) and item number or reference designation (col 10b) as noted in the FSN index.

c. When the figure and item number or reference designation are known, scrutinize columns 10a and 10b of the repair parts list (sec II) until the item is located.

d. When the FSN, reference number, figure number, item number and reference designation are not known, scrutinize column 3 of the repair parts list (sec II), which is arranged in alphabetical order.

1-6. Abbreviations
Not applicable.

1-7. Reporting of Equipment Improvements

The reporting of errors, omissions, and recommendations for improving this publication by the individual user is encouraged. Reports should be submitted on DA Form 2028 (Recommended Changes to Publications) and forwarded direct to Commander, US Army Electronics Command, ATTN: AMSEL-MA-CRA, Fort Monmouth, NJ, 07703.

(Next printed page is 6.)

SECTION II

(1) SMR CODE	(2) FEDERAL STOCK NUMBER	(3) DESCRIPTION REFERENCE NUMBER & MFR. CODE USABLE ON CODE	(4) UNIT OF MEAS	(5) QTY INC IN UNIT	(6) 30-DAY DS MAINT ALLOWANCE			(7) 30-DAY GS MAINT ALLOWANCE			(8) 1-YR ALW PER 100 EQUIP CNTGCT	(9) DEPOT MAINT ALW PER 100 EQUIP	(10) ILLUSTRATION	
					(a)	(b)	(c)	(a)	(b)	(c)			(a)	(b)
					1-20	21-50	51-100	1-20	21-50	51-100			FIGURE NO.	ITEM NO
PAOZZ	5935-853-6084	ADAPTER, ELECTRON TUBE SOCKET NO-REF-.... DESIG 78-901 (02660)	EA	4	*	*	*	*	*	*		4		
PAHZZ	6625-864-3127	ARM, ACTUATOR NO-REF-DESIG P/D TUBE..... CLAMP ASSY AP21903 (82199)	EA	1				*	*	*		5		
PAHZZ	6625-864-3128	BLOWER, MOTOR ASSEMBLY NO-REF-DESIG C/O. FAN, MOTOR AND BRACKET CP21189 (82199)	EA	1				*	*	*		3	14	B1
PAHZZ	6145-504-1015	CABLE, POWER, ELECTRICAL NO-REF-DESIG 11. FT LONG CO-03MGF3-6-0360 (81349)	EA	1				*	*	*		10	2	W9
PAHZZ	5995-249-6644	CAP, ELECTRICAL NO-REF-DESIG PLASTIC.... BRONZE INSERT 905L (01009)	EA	1				*	*	*		3		
PAHZZ	5910-699-2604	CAPACITOR, FIXED, PAPER DIELECTRIC C8 1 UF 50RM5% 1500 VDCW TJH15010J (14655)	EA	1				*	*	*		3	17	C8
PAHZZ	590-112-7131	CAPACITOR, FIXED, PAPER DIELECTRIC C3 2 UF 600 VDCW CP5481EF205V (81349)	EA	2				*	*	*		3	17	C3
PAHZZ	5910-112-7131	CAPACITOR, FIXED, PAPER DIELECTRIC C4.. 2 UF 600 VDCW CP5481EF205V (81349)	EA	REF				*	*	*			17	C4
PAHZZ	5910-543-0158	CAPACITOR, FIXED, METALIZED DIELECTRIC C9 1 UF P30RM20% 200 VDCW MT2P1 (83125)	EA	1				*	*	*		3	15	C9
PAHZZ	5910-397-9782	CAPACITOR, FIXED, PLASTIC DIELECTRIC C1 2 UF PORM10% 4000 VDCW AOC4M2 (30152)	EA	2				*	*	*		3	17	C1
PAHZZ	5910-897-9782	CAPACITOR, FIXED, PLASTIC DIELECTRIC C2 2 UF PORM10% 4000 VDCW AOC4M2 (30152)	EA	REF				*	*	*			17	C2
PAHZZ	5910-897-9697	CAPACITOR, FIXED, ELECTROLYTIC C5 30 MF M20%P85% 450 VDCW AFH3-39 (00656)	EA	1				*	*	*		3	17	C5
PAHZZ	6625-870-3806	CHART NO-REF-DESIG..... EP22278 (82199)	EA	1				*	*	*		3		
PAHZZ	6625-864-3126	CLAMP NO-REF-DESIG RIM CLINCHING CLAMP AP82199 (82199)	EA	4				*	*	*		3		
PAHZZ	5325-171-4238	CLAMP NO-REF-DESIG..... AN3195-4 (81349)	EA	1				*	*	*		3		
PAHZZ	5940-204-5222	CLIP, ELECTRICAL NO-REF-DESIG GRID..... PLATE 36002 (76489)	EA	1				*	*	*		3		
PAHZZ	5940-151-4028	CLIP, ELECTRICAL NO-REF-DESIG ALLIGATOR. STYLE 168 (84438)	EA	1				*	*	*		3		
PAHZZ	5935-201-3545	CONNECTOR, RECEPTACLE, ELECTRICAL J6 2. CONT 7486 (74545)	EA	1				*	*	*		3	18	J6
PAHZZ	5935-823-0664	CONNECTOR, RECEPTACLE, ELECTRICAL NO-REF- DESIGN 2 CONT AA2MTW8 (01000)	EA	1				*	*	*		3		

CONTINUED

SECTION II

TM11-6625-404-34P

(1) SMR CODE	(2) FEDERAL STOCK NUMBER	(3) DESCRIPTION REFERENCE NUMBER & MFR. CODE USABLE ON CODE		(4) UNIT OF MEAS	(5) QTY INC IN UNIT	(6) 30-DAY DS MAINT ALLOWANCE			(7) 30-DAY GS MAINT ALLOWANCE			(8) 1-YR ALW PER 100 EQUIP CNTGCT	(9) DEPOT MAINT ALW PER 100 EQUIP	(10) ILLUSTRATION	
						(a)	(b)	(c)	(a)	(b)	(c)			(a)	(b)
						1-20	21-50	51-100	1-20	21-50	51-100			FIGURE NO.	ITEM NO.
PAHZZ	5935-549-2645	CONNECTOR, RECEPTACLE, ELECTRICAL	NO-REF--	EA	1				*	*	*		3		
		DESIG 2 CONT 462MINMS (01009)													
PAHZZ	5935-683-5888	CONNECTOR, PLUG, ELECTRICAL	NO-REF-DESIG..	FA	1				*	*	*		3		
		2 CONT LOCKING TYPE 7484 (90002)													
PAHZZ	5935-644-7206	CONNECTOR, PLUG, ELECTRICAL	P6 8 CONT .	FA	3				*	*	*		3		P6
		86CPBT (02660)													
PAHZZ	5935-224-3368	CONNECTOR, PLUG, ELECTRICAL	NO-REF-DESIG..	EA	2				*	*	*		3		
		4 CONT 86CPS4S (02660)													
PAHZZ	5935-729-3745	CONNECTOR, PLUG, ELECTRICAL	P7 1 CONT	EA	1				*	*	*		3	43	P7
		4138 (11242)													
PAHZZ	5935-853-5836	CONNECTOR, PLUG, ELECTRICAL	P1 1 CONT .	EA	1				*	*	*		3		P1
		1715 (88245)													
PAHZZ	6625-885-5858	CONTACT, ELECTRICAL	NO-REF-DESIG 26.....	EA	4				*	*	*		3		
		POINTS AP21611 (82199)													
PAHZZ	5355-564-7368	COUPLING, INSULATED SHAFT	NO-REF-DESIG...	EA	10				*	*	*		3		
		1/4 IN SHAFT ACCOM 1 31/32 IN LG 736100-2 (56232)													
PAOZZ	6625-870-2268	COVER ASSEMBLY	NO-REF-DESIG SHEET.....	FA	1	*	*	*	*	*	*		3		
		METAL, INCL SW AND CONNECTOR C114560 (82199)													
PAOZZ	5935-897-9858	COVER, ELECTRICAL CONNECTOR	NO-REF-DESIG.	EA	1	*	*	*	*	*	*		3		
		1 7/16 IN LG X 9/16 IN WD X 1/8 IN D AP21027 (82199)													
PAOZZ	5935-897-9859	COVER, ELECTRON TUBE SOCKET	NO-REF-DESIG.	EA	2	*	*	*	*	*	*		3		
		1 3/4 IN LG X 7/8 IN 1/8 IN D AP20915 (82199)													
PAOZZ	5935-853-5872	COVER, ELECTRON TUBE SOCKET	NO-REF-DESIG.	EA	2	*	*	*	*	*	*		3		
		2 7/8 IN LG, 2 1/4 WD X 1/8 IN THK AP20922 (82199)													
PAOZZ	6625-870-2265	COVER, MECHANICAL	NO-REF-DESIG ALUMINUM .	EA	1	*	*	*	*	*	*		3		
		6 7/8 IN LG X 4 13/16 IN WD X 3 1/2 IN H C113408 (82199)													
PAOZZ	5960-060-3450	ELECTRON TUBE	V1.....	EA	1	*	*	*	*	*	*	100	17	V1	
		3B29 (790261)													
PAOZZ	5960-272-9182	ELECTRON TUBE	V2.....	EA	4	*	*	*	*	*	*	100	17	V2	
		6X4W (81349)													
PAOZZ	5960-272-9182	ELECTRON TUBE	V3.....	EA	REF	*	*	*	*	*	*		17	V3	
		6X4W (81349)													
PAOZZ	5960-272-9182	ELECTRON TUBE	V4.....	EA	REF	*	*	*	*	*	*		17	V4	
		6X4W (81349)													
PAOZZ	5960-272-9182	ELECTRON TUBE	V5.....	EA	REF	*	*	*	*	*	*		17	V5	
		6X4W (81349)													
PAHZZ	5920-010-6652	FUSE, CARTRIDGE	F1 3 AMP, 250 V	EA	2				*	*	*		50	14	F1
		3AG1043 (75915)													
PAHZZ	5920-010-6652	FUSE, CARTRIDGE	F2 3 AMP, 250 V	EA	REF				*	*	*		14	14	F2
		3AG1043 (75915)													

SECTION II

TMH166825404-34P

(1) SMR CODE	(2) FEDERAL STOCK NUMBER	(3) DESCRIPTION REFERENCE NUMBER & MFR. CODE USABLE ON CODE		(4) UNIT OF MEAS	(5) QTY INC IN UNIT	(6) 30-DAY DS MAINT ALLOWANCE			(7) 30-DAY GS MAINT ALLOWANCE			(8) 1-YR ALW PER 100 EQUIP CNTGCT	(9) DEPOT MAINT ALW PER 100 EQUIP	(10) ILLUSTRATION	
						(a)	(b)	(c)	(a)	(b)	(c)			(a)	(b)
						1-20	21-50	51-100	1-20	21-50	51-100			FIGURE NO.	ITEM NO.
PAHZZ	5920-556-0144	FUSEHOLDER XF1.....	EA	2				*	*	*		3			XI
		342003 (75915)													
PAHZZ	5920-556-0144	FUSEHOLDER XF2.....	EA	REF				*	*	*					XI
		342003 (75915)													
PAHZZ	5325-281-1557	GROMMET,RUBBER NO-REF-DESIG.....	EA	12				*	*	*		4			
		AN931-10-14 (81349)													
PAHZZ	5325-290-3785	GROMMET,RUBBER NO-REF-DESIG.....	EA	2				*	*	*		4			
		AN931A10-14 (80044)													
PAHZZ	5325-185-0017	GROMMET,RUBBER NO-REF-DESIG.....	EA	12				*	*	*		4			
		MS3548-33 (96906)													
PAHZZ	5325-185-0004	GROMMET,RUBBER NO-REF-DESIG.....	EA	12				*	*	*		4			
		AN931A6-10 (80044)													
PAHZZ	5325-249-6350	GROMMET,RUBBER NO-REF-DESIG.....	EA	12				*	*	*		4			
		X2810 (76385)													
PAHZZ	5325638-9385	GROMMET,RUBBER NO-REF-DESIG.....	EA	12				*	*	*		4			
		P650F (76385)													
PAHZZ	3120-690-2749	GROMMET,PLASTIC NO-REF-DESIG SPLIT.....	EA	4				*	*	*		4			
		TYPE													
		4L2FF (55875)													
PAHZZ	5930-853-4170	INSULA JR,BUSHING NO-REF-DESIG.....	EA	4				*	*	*		3			
		PHENOLIC 3/8 IN DIA													
		AP19949 (82199)													
PAHZZ	5970-853-4169	INSULATOR,BUSHING NO-REF-DESIG.....	EA	12				*	*	*		3			
		PHENOLIC 1/2 IN DIA													
		AP19948 (82199)													
PAHZZ	5970-870-2321	INSULATOR NO-REF-DESIG PHENOLIC 1 1/4.	EA	1				*	*	*		3			
		IN LG X 7/8 IN DIA													
		AP21221 (82199)													
PAHZZ	5935-257-7044	JACK,TIP J1.....	EA	2				*	*	*		1	14		J
		1189308 (78947)													
PAHZZ	5935-257-7044	JACK,TIP J2.....	EA	REF				*	*	*			14		J
		1189308 (78947)													
PAHZZ	5935-549-4887	JACK,TIP J6 STD PHONE TIP CONT	EA	1				*	*	*		1	43		J
		105-520 (74970)													
PAHZZ	5935-581-1385	JACK,TIP NO-REF-DESIG STD BANANA CONT .	EA	1				*	*	*		1			
		8888 (11242)													
PACZZ		KNOB NO-REF-DESIG.....	EA	4	*	*	*	*	*	*		3			
		S626-36 (75376)													
PACZZ	5355-823-9862	KNOB NO-REF-DESIG W/POINTER	EA	11	*	*	*	*	*	*		3			
		FL36-3L88 (41226)													
PACZZ	6240-179-1812	LAMP,GLOW DS4.....	EA	1	*	*	*	*	*	*		100	15		DS
		NE48 (24446)													
PACZZ	6240-223-9100	LAMP,GLOW DS1.....	EA	3	*	*	*	*	*	*		100	15		DS
		NE51 (24446)													
PACZZ	6240-223-9100	LAMP,GLOW DS2.....	EA	REF	*	*	*	*	*	*			43		DS
		NE51 (24446)													
PACZZ	6240-223-9100	LAMP,GLOW DS3.....	EA	REF	*	*	*	*	*	*			43		DS
		NE51 (24446)													
PAHZZ	6219-843-5378	LAMPHOLDER X11.....	EA	3				*	*	*		5			XI
		95408-937 (72619)													
PAHZZ	6210-299-6425	LAMPHOLDER X14.....	EA	1				*	*	*		5	15		XI
		80206-5 (72619)													

SECTION II

TM11-6625-404-34P

(1) SMR CODE	(2) FEDERAL STOCK NUMBER	(3) DESCRIPTION REFERENCE NUMBER & MFR. CODE USABLE ON CODE	(4) UNIT OF MEAS	(5) QTY INC IN UNIT	(6) 30-DAY DS MAINT ALLOWANCE			(7) 30-DAY GS MAINT ALLOWANCE			(8) 1-YR ALW PER 100 EQUIP CNTGCT	(9) DEPOT MAINT ALW PER 100 EQUIP	(10) ILLUSTRATION	
					(a)	(b)	(c)	(a)	(b)	(c)			(a)	(b)
					1-20	21-50	51-100	1-20	21-50	51-100			FIGURE NO.	ITEM NO.
PAHZZ	6210-295-2310	LENS, INDICATOR LIGHT X14..... 80-837 (72619)	EA	1				*	*	*		5		X14
PAHZZ	6210-188-87778	LENS, INDICATOR LIGHT X11..... 95-937 (72619)	EA	3				*	*	*		5		X11
PAHZZ	6625-892-4344	METER M1 PANEL TYPE 0-5 CW, 0-100... CW 50 SCALE DIV 1000 OHM PER V SENSITIVITY DIAL FACE POLORAD PART AP20190 S47X (28569)	EA	1				*	*	*		3	15	M1
PAHZZ	6625-853-6803	METER M2 PANEL TYPE 0-100 CW, 0-500... CW DIAL FACE POLORAD PART AP20189 S48 (28569)	EA	1				*	*	*		4	15	M2
PAHZZ	6625-892-4346	METER M3 PANEL TYPE 0-10 CW 1000 OHM PER V SENSITIVITY S47X (28569)	EA	1				*	*	*		3	15	M3
PAHZZ	5310-853-4809	NUT, SLEEVE NO-REF-DESIG PHENOLIC 2 1/8 IN LG AP20516 (82199)	EA	2				*	*	*		3		
PAHZZ	5310-850-8660	NUT, SLEEVE NO-REF-DESIG OPEN END TYPE . 2 IN O/A AP20526 (82199)	EA	6				*	*	*		3		
PAHZZ	6625-870-2266	POST, COVER, STOP NO-REF-DESIG 1/4 IN DIA X 13/16 IN LG AP20927 (82199)	EA	1				*	*	*		1		
PAHZZ	6625-870-2267	POST, COVER, STOP NO-REF-DESIG 1/4 IN DIA X 1/4 IN LG AP20920 (82199)	EA	2				*	*	*		1		
PAHZZ	5950-824-0734	REACTOR L1 20 HY IND 100 MILLAMPS .. 620 OHMS MAX 600 V JP21418 (82199)	EA	1				*	*	*		2	17	L1
PAHZZ	5945-552-6657	RELAY, ARMATURE K2 DPDT	EA	1				*	*	*		3	18	K2
PAOZZ	5945-823-2377	RELAY, ARMATURE K3 SPDT	EA	1	*	*	*	*	*	*		3	17	K3
PAHZZ	5945-557-4850	RELAY, ARMATURE K4 DPDT	EA	1				*	*	*		3	17	K4
PAHZZ	5945-222-5840	RELAY, ARMATURE K5 DPST AC, 125 V, 15 AMP 1174 (00614)	EA	2				*	*	*		3	15	K5
PAHZZ	5945-222-5840	RELAY, ARMATURE K6 DPST AC, 125 V, 15 AMP 1174 (00614)	EA	REF				*	*	*			15	K6
PAHZZ	5945-853-4180	RELAY, ARMATURE K7 DPDT AC, 125 V, 15 AMP 1177 (00614)	EA	1				*	*	*		3	15	K7
PAOZZ	5945-223-7262	RELAY, THERMAL K1 115 V, 2 W 2 HEATER ELEMENTS 115N060 (70563)	EA	1	*	*	*	*	*	*		5	17	K1
PAHZZ	5960-870-3807	RETAINER, ELECTRON TUBE NO-REF-DESIG 2.. 7/8 IN LG X 4 5/16 IN WD X 2 1/8 IN H CP21899 (82199)	EA	1				*	*	*		3		
PAHZZ	5905-195-6814	RESISTOR, FIXED, COMPOSITION R17 1000... OHMS FORM10Z 2 W CP21899 (82199)	EA	1				*	*	*		3	18	R17

CONTINUED

SECTION II

TM11-6625-404-34P

(1) SMR CODE	(2) FEDERAL STOCK NUMBER	(3) DESCRIPTION REFERENCE NUMBER & MFR. CODE USABLE ON CODE		(4) UNIT OF MEAS	(5) QTY INC IN UNIT	(6) 30-DAY DS MAINT ALLOWANCE			(7) 30-DAY GS MAINT ALLOWANCE			(8) 1-YR ALW PER 100 EQUIP CNYGCV	(9) DEPT MAINT ALW PER 100 EQUIP	(10) ILLUSTRATION	
						(a)	(b)	(c)	(a)	(b)	(c)			(a)	(b)
						1-20	21-50	51-100	1-20	21-50	51-100			FIGURE NO.	ITEM NO.
PAHZZ	5905-190-8887	RESISTOR, FIXED, COMPOSITION OHMS PORM5R 1/2 W RC20GF202J (81349)	R11 2000...	EA	1				*	*	*		3	15	R11
PAHZZ	5905-254-7090	RESISTOR, FIXED, COMPOSITION OHMS PORM10R 2 W RC42GF683K (81349)	R12 68,000.	EA	1				*	*	*		3	17	R12
PAHZZ	5935-299-2004	RESISTOR, FIXED, COMPOSITION OHMS PORM10R 1 W RC32GF104K (81349)	R13 100,000	EA	1				*	*	*		3	18	R13
PAHZZ	5905-254-7101	RESISTOR, FIXED, COMPOSITION OHMS PORM10R 2 W RC42GF104K (81349)	R2 100,000	EA	1				*	*	*		3	18	P2
PAHZZ	5905-279-1940	RESISTOR, FIXED, COMPOSITION OHMS PORM10R 2 W RC42GF104K (81349)	R18 180,000	EA	8				*	*	*		3	17	R18
PAHZZ	5905-279-1940	RESISTOR, FIXED, COMPOSITION OHMS PORM10R 2 W RC42GF184K (81349)	R19 180,000	EA	REF				*	*	*			17	R19
PAHZZ	5905-279-1940	RESISTOR, FIXED, COMPOSITION OHMS PORM10R 2 W RC42GF184K (81349)	R20 180,000	EA	KEF				*	*	*			17	R20
PAHZZ	5905-279-1940	RESISTOR, FIXED, COMPOSITION OHMS PORM10R 2 W RC42GF184K (81349)	R21 180,000	EA	REF				*	*	*			17	R21
PAHZZ	5905-279-1940	RESISTOR, FIXED, COMPOSITION OHMS PORM10R 2 W RC42GF184K (81349)	R22 180,000	EA	REF				*	*	*			17	R22
PAHZZ	5905-279-1940	RESISTOR, FIXED, COMPOSITION OHMS PORM10R 2 W RC42GF184K (81349)	R23 180,000	EA	REF				*	*	*			17	R23
PAHZZ	5903-279-1940	RESISTOR, FIXED, COMPOSITION OHMS PORM10R 2 W RC42GF184K (81349)	R24 180,000	EA	REF				*	*	*			17	R24
PAHZZ	5945-279-1940	RESISTOR, FIXED, COMPOSITION OHMS PORM10R 2 W RC42GF184K (81349)	R25 180,000	EA	REF				*	*	*			17	R25
PAHZZ	5935-299-1994	RESISTOR, FIXED, COMPOSITION OHMS PORM10R 1 W RC32GF474K (81349)	R14 470,000	EA	2				*	*	*		3	17	R14
PAHZZ	5905-299-1994	RESISTOR, FIXED, COMPOSITION OHMS PORM10R 1 W RC32GF474K (81349)	R26 470,000	EA	REF				*	*	*			17	R26
PAHZZ	5935-279-2516	RESISTOR, FIXED, COMPOSITION OHMS PORM5R 1/2 W RC20GF514J (81349)	R28 510,000	EA	1				*	*	*		3	15	R28
PAHZZ	5905-815-3798	RESISTOR, FIXED, FILM PCRM1R 1/4 W RN65B24R9F (81349)	R10 25 OHMS.....	EA	1				*	*	*		3	15	R10
PAHZZ	3905-552-5138	RESISTOR, FIXED, FILM FOR 1/2 W RN75B4003W (81349)	R3 400,000 OHMS..	EA	1				*	*	*		3	15	R3

Continued

SECTION II

TM11-6625-404-34P

(1) SMR CODE	(2) FEDERAL STOCK NUMBER	(3) DESCRIPTION REFERENCE NUMBER & MFR. CODE USABLE ON CODE		(4) UNIT OF MEAS	(5) QTY INC IN UNIT	(6) 30-DAY DS MAINT ALLOWANCE			(7) 30-DAY GS MAINT ALLOWANCE			(8) 1-YR ALW PER 100 EQUIP QTY	(9) DEPOT MAINT ALW PER 100 EQUIP	(10) ILLUSTRATION	
						(a)	(b)	(c)	(a)	(b)	(c)			(a)	(b)
						1-20	21-50	51-100	1-20	21-50	51-100			FIGURE NO.	ITEM NO.
PAHZZ	5905-542-7696	RESISTOR, FIXED, FILM PORM1X 1 W RN7589003F (81349)	R4 900,000 OHMS..	EA	1				*	*	*		3	15	R4
PAHZZ	5905-853-5903	RESISTOR, FIXED, FILM PORM20X 1/4 W HFR (77764)	R8 1.25 MEG OHMS.	EA	1				*	*	*		3	15	R8
PAHZZ	5905-853-4866	RESISTOR, FIXED, FILM PORM1X 2 W RN80B1354F (81349)	R5 1.35 MEG.....	EA	1				*	*	*		3	15	R5
PAHZZ	5905-883-6468	RESISTOR, FIXED, FILM PORM1X 2 W RN80B1754F (81483)	R6 1.75 MEG OHMS.	EA	2				*	*	*		3	15	R6
PAHZZ	5905-883-6468	RESISTOR, FIXED, FILM PORM1X 2 W RN80B1754F (81483)	R7 1.75 MEG OHMS.	EA	REF				*	*	*			15	R7
PAHZZ	5905-853-4815	RESISTOR, VARIABLE JO313 (44625)	R1 8 OHMS PORM10X 50 W	EA	1				*	*	*		3	15	R1
PAHZZ	5340-847-1960	RING, RETAINING S13357M1 (79136)	NO-REF-DESIG STEEL	EA	2				*	*	*		2		
PAHZZ	6625-875-1047	SCROLL ASSEMBLY C140117 (82199)	NO-REF-DESIG RECEPTACLE FOR CHART	EA	1				*	*	*		3		
PAHZZ	5935-221-6572	SHELL, ELECTRICAL CONNECTOR STEEL 1 5/32 IN DIA X 1 1/16 IN LG B21204 (82199)	NO-REF-DESIG	EA	8				*	*	*		3		
PAOZZ	5960-295-7652	SHIELD, ELECTRON TUBE TS102U03 (81349)	EV1.....	EA	4	*	*	*	*	*	*		10		EV1
PAOZZ	5960-295-7652	SHIELD, ELECTRON TUBE TS102U03 (81349)	EV2.....	EA	REF	*	*	*	*	*	*				EV2
PAOZZ	5960-295-7652	SHIELD, ELECTRON TUBE TS102U03 (81349)	EV3.....	EA	REF	*	*	*	*	*	*				EV3
PAOZZ	5960-295-7652	SHIELD, ELECTRON TUBE TS102U03 (81349)	EV4.....	EA	REF	*	*	*	*	*	*				EV4
PAHZZ	5935-063-5789	SOCKET, ELECTRON TUBE TS101P01 (81349)	XK1.....	EA	2				*	*	*		3	18	XK1
PAHZZ	5935-063-5789	SOCKET, ELECTRON TUBE TS101P01 (81349)	XK3.....	EA	REF				*	*	*			18	XK3
PAHZZ	5935-853-5871	SOCKET, ELECTRON TUBE AP21036 (82199)	XT1.....	EA	1				*	*	*		3	14	XT1
PAHZZ	5935-853-6042	SOCKET, ELECTRON TUBE AP20191 (82199)	XT2.....	EA	1				*	*	*		3	14	XT2
PAHZZ	5935-871-5028	SOCKET, ELECTRON TUBE 78S3S (02660)	XT3.....	EA	1				*	*	*		3	14	XT3
PAHZZ	5935-871-5028	SOCKET, ELECTRON TUBE 78S3S (02660)	XW7.....	EA	1				*	*	*		3		XW7
PAHZZ	5935-242-4988	SOCKET, ELECTRON TUBE 78S4S (02660)	XT4.....	EA	1				*	*	*		3	14	XT4
PAHZZ	5935-257-7555	SOCKET, ELECTRON TUBE 102J308 (02660)	XV1 TYPE A 4 PIN.	EA	1				*	*	*		3	18	XV1

CONTINUED

SECTION II

TM11-6625-404-34P

(1) SMR CODE	(2) FEDERAL STOCK NUMBER	(3) DESCRIPTION REFERENCE NUMBER & MFR. CODE USABLE ON CODE		(4) UNIT OF MEAS	(5) QTY INC IN UNIT	(6) 30-DAY DS MAINT ALLOWANCE			(7) 30-DAY GS MAINT ALLOWANCE			(8) 1-YR ALW PER 100 EQUIP CNTGCT	(9) DEPOT MAINT ALW PER 100 EQUIP	(10) ILLUSTRATION	
						(a)	(b)	(c)	(a)	(b)	(c)			(a)	(b)
						1-20	21-50	51-100	1-20	21-50	51-100			FIGURE NO.	ITEM NO.
CONTINUED															
PAHZZ	5935-260-0516	DCKET,ELECTRON TUBE	XV2.....	EA	4				*	*	*		3	18	XV
		S102P01 (81349)													
PAHZZ	5935-260-0516	DCKET,ELECTRON TUBE	XV3.....	EA	REF				*	*	*			18	XV
		S102P01 (81349)													
PAHZZ	5935-260-0516	DCKET,ELECTRON TUBE	XV4.....	EA	REF				*	*	*			18	XV
		S102P01 (81349)													
PAHZZ	5935-260-0516	DCKET,ELECTRON TUBE	XV5.....	EA	REF				*	*	*			18	XV
		S102P01 (81349)													
PAHZZ	5935-162-3078	DCKET,ELECTRON TUBE	XW5 TYPE P. 8 PIN	EA	1				*	*	*		3		XW
		DNT													
		858T (02660)													
PAHZZ	5935-871-5029	DCKET,ELECTRON TUBE	XW6.....	EA	1				*	*	*		3		XW
		K5444 (82199)													
PAHZZ	5935-257-7292	DCKET,ELECTRON TUBE	XW8 7 CONT	EA	1				*	*	*		3		XW
		8A7P (02660)													
PAHZZ	6625-853-6097	PACER, SLEEVE	NO-REF-DESIG ALUMINUM ...	EA	2				*	*	*		2		
		P20926 (82199)													
PAHZZ	6625-853-6098	PACER, SLEEVE	NO-REF-DESIG ALUMINUM ...	EA	2				*	*	*		2		
		P21028 (82199)													
PAHZZ	6625-853-6096	PACER, SLEEVE	NO-REF-DESIG.....	EA	2				*	*	*		2		
		P21025 (82199)													
PAHZZ	662-853-6100	PACER, SLEEVE	NO-REF-DESIG ALUMINUM ...	EA	1				*	*	*		2		
		.609 LG													
		P21026 (82199)													
PAHZZ	6625-850-3050	PACER, SLEEVE	NO-REF-DESIG ALUMINUM ...	EA	1				*	*	*		2		
		.359 IN LG													
		P21089 (82199)													
PAHZZ	6625-897-9611	PACER, SLEEVE	NO-REF-DESIG PD FLAT.....	EA	4				*	*	*		2		
		YPE 3/8 IN DIA, 1/8 IN THK													
		P20751 (82199)													
PAHZZ	6625-897-9612	PACER, SLEEVE	NO-REF-DESIG RD FLAT.....	EA	12				*	*	*		2		
		YPE 1/2 IN DIA, 1/4 IN THK													
		P20750 (82199)													
PAHZZ	6625-853-6786	PRING,HELICAL,TORSION	NO-REF-DESIG.....	EA	1				*	*	*		1		
		FEEL OD 0.350 IN ID 0.306 IN													
		P210288 (82199)													
PAHZZ	5360-823-5217	PRING,HELICAL,EXTENSION	NO-REF-DESIG...	EA	2				*	*	*		5	24	
		7 TURNS 1 13/16 IN LG O/A													
		P21910 (82199)													
PAHZZ	6625-853-6785	PRING,HELICAL TORSION	NO-REF-DESIG.....	EA	1				*	*	*		1		
		P20916-1 (82199)													
PAHZZ	6625-853-6784	PRING,HELICAL TORSION	NO-REF-DESIG.....	EA	1				*	*	*		1		
		P20916-2 (82199)													
PAHZZ	6625-853-6783	PRING,HELICAL TORSION	NO-REF-DESIG.....	EA	1				*	*	*		1		
		P20925-2 (82199)													
PAHZZ	6625-853-8104	PRING,HELICAL TORSION	NO-REF-DESIG.....	EA	1				*	*	*		1		
		9/64 IN LG O/A													
		P20925-1 (82199)													
PAHZZ	5935-762-4821	TRAP NUT,ELECTRON TUBE SOCKET	NO-REF-...	EA	4				*	*	*		3		
		WTC P106026-4(11788)													

CONTINUED

SECTION II

TM11-6625-404-24P

(1) SMR CODE	(2) FEDERAL STOCK NUMBER	(3) DESCRIPTION REFERENCE NUMBER & MFR. CODE USABLE ON CODE		(4) UNIT OF MEAS	(5) QTY INC IN UNIT	(6) 30-DAY DS MAINT ALLOWANCE			(7) 30-DAY GS MAINT ALLOWANCE			(8) 1-YR ALW PER 100 EQUIP CNTGCT	(9) DEPOT MAINT ALW PER 100 EQUIP	(10) ILLUSTRATION	
						(a)	(b)	(c)	(a)	(b)	(c)			(a)	(b)
						1-20	21-50	51-100	1-20	21-50	51-100			FIGURE NO.	ITEM NO.
PAHZZ	5930-870-2272	SWITCH ACTUATOR	NO-REF-DESIG.....	EA	1				*	*	*		3		
PAHZZ	6625-864-3134	SWITCH ASSEMBLY, POWERSTAT	NO-REF-DESIG..	EA	1				*	*	*		3		
PAHZZ	5930-519-8144	SWITCH, INTERLOCK	S14 SPDT 10 AMP 750	EA	2				*	*	*		5	18	S14
PAHZZ	5930-519-8144	SWITCH, INTERLOCK	S15 SPDT 10 AMP 750	EA	REF				*	*	*			16	S15
PAHZZ	5930-296-6459	SWITCH, PUSH	S13 SPST	EA	1				*	*	*		5	15	S13
PAHZZ	5930-864-4785	SWITCH, ROTARY	S2 2 SECT, 11.....	EA	1				*	*	*		5	15	S2
PAHZZ	5930-864-4784	SWITCH, ROTARY	S3 2 SECT, 11.....	EA	1				*	*	*		5	15	S3
PAHZZ	5960-864-6293	SWITCH, ROTARY	S5 2 SECT 3 POLE, 3... THROWS	EA	1				*	*	*		5	15	S5
PAHZZ	5930-864-4782	SWITCH, ROTARY	S6 3 SECT, 11.....	EA	1				*	*	*		5	15	S6
PAHZZ	5930-823-0951	SWITCH, ROTARY	S7 1 SECT, 2 POLE, 3... THROWS	EA	1				*	*	*		5	15	S7
PAHZZ	5930-864-6291	SWITCH, ROTARY	S8 2 SECT, 2 POLE, 6... THROWS	EA	1				*	*	*		5	15	S8
PAHZZ	5930-864-6295	SWITCH, ROTARY	S9 2 SECT, 2 POLE, 7... THROWS	EA	1				*	*	*		5	43	S9
PAHZZ	5930823-0956	SWITCH, ROTARY	S10 4 SECT, 10 POLE, 3... THROWS	EA	1				*	*	*		5	15	S10
PAHZZ	5930-864-6265	SWITCH, ROTARY	S11 4 SECT, 2 POLE, 5... THROWS	EA	1				*	*	*		5	15	S11
PAHZZ	5930-864-6264	SWITCH, ROTARY	S12 1 SECT 3 POLE, 3... THROWS	EA	1				*	*	*		5	15	S12
PAHZZ	5930-245-9642	SWITCH, SLIDE	NO-REF-DESIG.....	EA	1				*	*	*		5		
PAHZZ	5930-655-1575	SWITCH, TOGGLE	S1 DPST	EA	1				*	*	*		5	15	S1
PAHZZ	5930-823-0581	SWITCH, TOGGLE	S4 SPST	EA	1				*	*	*		5	15	S4

SECTION II

T M 1 1 - 6 6 2 5 - 4 0 4 - 2 4 P

(1) SMR CODE	(2) FEDERAL STOCK NUMBER	(3) DESCRIPTION REFERENCE NUMBER / MFR. CODE USABLE ON CODE	(4) UNIT OF MEAS	(5) QTY INC 'N UNIT	(6) 15-DAY OF MANTY ALLOWANCE			(7) 30-DAY OF MANTY ALLOWANCE			(8) 1-YR ALW PER 100 EQUIP CNTGCT	(9) 30-DAY ALW PER 100 EQUIP	(10) ILLUSTRATION	
					(a)	(b)	(c)	(a)	(b)	(c)			(a)	(b)
					1-20	21-50	51-100	1-20	21-50	51-100			FIGURE NO.	ITEM NO.
PAHZZ	5940-983-6095	TERMINAL BOARD E3..... 601-18 (75382)	EA	1				*	*	*		3	16	E3
PAHZZ	5940-898-4493	TERMINAL BOAR. NO-REF-DESIG 12 TERM ... 744 (82199)	EA	1				*	*	*		3		
PAHZZ	5940-825-4134	TERMINAL BOARD F1 23 TERM 601-23 (75382)	EA	2				*	*	*		3	16	F1
PAHZZ	5940-825-4134	TERMINAL BOARD E2 23 TERM 601-23 (75382)	FA	REF				*	*	*			15	E2
PAHZZ	5940-858-6628	TERMINAL, SAFETY NO-REF-DESIG BANANA.... CONT K37501 (76489)	EA	5				*	*	*		3		
PAHZZ	5950-688-2881	TRANSFORMER, VARIABLE, POWER T1 INPUT.. 60 V, 60 CYC, SINGLE PH OUTPUT 0-132 V OR 0-120 V 108 (58474)	EA	1				*	*	*		3	15	T1
PAHZZ	5950-883-6463	TRANSFORMER, VARIABLE, POWER T4 INPUT.. 120 V, SINGLE PH OUTPUT .0132 V, 1.25 AMP MAX, 1.65 KVA BP21144 (82199)	EA	1				*	*	*		3	15	T4
PAHZZ	5950-853-5949	TRANSFORMER, POWER, STEP-UP T5 PRI 115. V, 60 CYC SINGLE PH SECD 1600 V, 0.100 AMP 1000 V ST1211 (57102)	EA	1				*	*	*		3	17	T5
PAHZZ	5950-824-0731	TRANSFORMER, POWER, ISOLATION AND STEP-DOWN T6 PRI 115 V, 60 CYC SINGLE PH SECD 6.3 V 1.8 AMP 6.3 V 6 AMP, 2.5 V 5.0 AMP, 6.3 V 3.0 AMP, 115 V 0.075 AMP ST1213 (57102)	EA	1				*	*	*		3	17	T6
PAHZZ	5950-853-5948	TRANSFORMER, POWER, STEP-UP T7 PRI 115. V 60 CYC, SINGLE PH SECD 400 V 0.030 AMP ST1214 (57102)	EA	1				*	*	*		3	17	T7
PAHZZ	5950-853-6049	TRANSFORMER, POWER, STEP-UP AND STEP-DOWN .. T8 PRI 115 V 60 CYC SINGLE PH SECD 250 V TAPPED 50 V 0.030 AMP ST1215 (57102)	EA	1				*	*	*		3	17	T8
PAHZZ	5950-752-4427	TRANSFORMER, POWER, STEP-DOWN T9 PRI WD INPUT 117 V, 50-60 CYC, SINGLE PH SECD WD 6.3 V, CTR TAPPED 0.6 AMP P6465 (8CC89)	EA	1				*	*	*		3	15	T9
PAHZZ	6625-850-1130	VOLTMETER M4 PANEL TYPE DC SCALE 0- 5000 CW (DIAL FACE POLORAD NO. AP-20188) S48 (28569)	EA	1				*	*	*		4	15	M4

SECTION IV

TM11-5625-404-34P

INDEX - FEDERAL STOCK NUMBER AND REFERENCE NUMBER
CROSS-REFERENCE TO FIGURE AND ITEM NUMBER

STOCKNUMBER	FIGURE NO.	ITEM NO.	STOCK NUMBER	FIGURE NO.	ITEM NO.
3120-690-2749			5915-260-0516	18	XV3
5310-850-8660			5935-260-0516	18	XV4
5310-853-4809			5935-260-0516	18	XV5
5325-171-4238			5935-549-2645,		
5325-185-0004			5935-549-4887	43	J6
5325-185-0017			5935-581-1385		
5325-249-6350			5935-644-7206		P6
5325-281-1557			5935-683-5888		
5325-290-3785			5935-729-3745	43	P7
5325-638-9385			5935-762-4821		
5340-847-1960			5935-823-0664		
5355-565-7368			5935-853-5836		P1
5360-823-5217	24		5935-853-5871	14	XT1
5905-190-8887	15	R11	5935-853-5672		
5905-195-6814	18	R17	5935-853-6342	14	XT2
5905-254-7090	17	R12	5935-853-6084		
5905-254-7101	18	R2	5935-871-5028		XW7
5905-279-1940	17	R18	5935-871-5028	14	XT3
5905-279-1940	17	R19	5935-871-5029		XW6
5905-279-1940	17	R20	5935-897-9858		
5905-279-1940	17	R21	5935-897-9859		
5905-279-1940	17	R22	5940-151-4028		
5905-279-1940	17	R23	5940-204-5222		
5905-279-1940	17	R24	5940-825-4134	15	E2
5905-279-1940	17	R25	5940-825-4134	16	E1
5905-279-2516	15	R28	5943-858-6628		
5905-299-1993	17	R14	5940-898-4493		
5905-299-1993	17	R26	5940-983-6095	16	E3
5905-299-2004	18	R13	5945-222-5840	15	K5
5905-2542-7696	15	R4	5945-222-5840	15	K6
5905-552-5138	15	R3	5945-223-7262	17	K1
5905-815-3798	15	R10	5945-552-6657	18	K2
5905-853-4815	15	R1	5945-557-4850	17	K4
5905-853-4866	15	R5	5945-823-2377	17	K3
5905-853-5903	15	R8	5945-853-4180	15	K7
5905-883-6468	15	R6	5950-688-2881	15	T1
5905-883-6468	15	R7	5950-752-4427	15	T9
5910-112-7131	17	C3	5950-824-0731	17	T6
5910-112-7131	17	C4	5950-824-0734	17	L1
5910-543-0158	15	C9	5950-853-5948	17	T7
5910699-2604	17	C8	5950-853-5949	17	T5
5910-897-9697	17	C5	5950-853-6049	17	T8
5910-897-9782	17	C1	5950-883-6463	15	T4
5910-897-9782	17	C2		17	V1
5920-010-6652	14	F1	5960-272-3157	17	V2
5920-010-6652	14	F2	5960-272-9192	17	V3
5920-556-0144		XF1	5963-272-9182	17	V4
5920-556-0144		XF2	5960-272-9182	17	V5
5930-245-9642			5963-295-7652		EV1
5930-296-6459	15	S13	5963-295-7652		EV2
5930-519-8144	14	S15	5960-295-7652		EV3
5930-519-8144	18	S14	5960-295-7652		EV4
5930-655-1575	15	S1	5960-870-3807		
5930-823-0581	15	S4	5970-853-4169		
5930-823-0951	15	S7	5970-853-4170		
5930-823-0956	15	S10	5970-870-2321		
5930-864-4782	15	S6	5995-249-6644		
5930-864-4784	15	S3	6145-534-1015	2	W9
5930-864-4785	15	S2	6210-188-8778		X11
5930-864-6264	15	S12	6210-295-2310		X14
5930-864-6265	15	S11	6210-299-6425	15	X14
5930-864-6291	15	S8	6210-843-5378		X11
5930-864-6293	15	S5	4243-179-1312	15	DS4
5930-864-6295	43	S9	6240-223-9100	15	DS1
5930-870-2272			6240-223-9100	43	DS2
5935-063-5789	18	XK1	6240-223-9100	43	DS3
5935-063-5789	18	XK3	6625-850-1130	15	W4
5935-162-3078		XW5	6625-850-3050		
5935-201-3545	18	J6	6625-853-6096		
5935-221-6572			6625-853-6097		
5935-224-3368			6625-853-6098		
5935-242-4988	14	XT4	6625-853-6100		
	14	J1	6625-853-6783		
5935-257-7044	14	J2	6625-853-6784		
5935-257-7292		XW8	6625-853-6785		
5935-257-7555	18	XV1	6625-953-6786		
5935-260-0516	18	XV2	6625-853-6803		
5355-823-9862				15	W2

SECTION IV

TM11-6625-404-34P

STOCK NUMBER	FIGURE NO.	ITEM NO.	STOCK NUMBER	FIGURE NO.	ITEM NO.
6625-853-8104	14	B1	6625-870-2268	15	M1
6625-864-3126			6625-870-3806		
6625-864-3127			6625-375-1047		
6625-864-3128			6625-885-5858		
6625-864-3134			6625-892-4344		
6625-870-2265			6625-892-4346		
6625-870-2266			6625-897-9611		
6625-870-2267			6625-897-9612		

REFERENCE NO.	MFR CODE	FIG. NO.	ITEM NO.	REFERENCE NO.	MFR CODE	FIG. NO.	ITEM NO.
A FH3-39	00656	17	C5	NE48	24446	15	DS4
AK5444	82199		XW6	NE51	24446	15	DS1
AN3195-4	81349			NE51	24446	43	DS2
AN31-10-14	81349			NE51	24446	43	DS3
AN931A10-14	80044			PA20925-2	82199		
AN9S1A6-10	80344			P6465	80089	15	T9
AP19948	82199			P650F	76385		
AP19949	82199			RC20GF202J	81349	15	R11
AP20191	82199	14	XT2	PC20GF514J	81349	15	R28
AP20516	82199			PC32GF104K	81349	18	R13
AP20526	82199			RC32GF474K	81349	17	R14
AP20750	82199			RC32GF474K	81349	17	R26
AP20751	82199			RC42GF104K	81349	18	R2
AP20915	82199			RC42GF184K	81349	17	R18
AP20916-1	82199			RC42GF184K	81349	17	R19
AP20916-2	82199			RC42GF184K	81349	17	R20
AP20920	82199			RC42GF184K	81349	17	R21
AP20922	82199			RC42GF184K	81349	17	R22
AP20925-1	82199			RC42GF184K	81349	17	R23
AP20926	82199			RC42GF184K	81349	17	R24
AP20927	82199			RC42GK184K	81349	17	R25
AP20928	82199			RC42GF683K	81349	17	R12
AP20989	82199			RC42102K	81349	18	R17
AP21025	82199			RN65B249F	81349	15	R10
AP21025	82199			RN75B4003F	81349	15	R3
AP21027	82199			RN75B9003F	81349	15	R4
AP21028B	82199			RN80B1354F	81349	15	P5
AP21036	82199	14	XT1	RN80B1754F	81483	15	R6
AP21089	82199			RN80B1754F	81483	15	R7
AP21221	82199			ST1211	97102	17	T5
AP21611	82199			ST1213	97102	17	T6
AP21903	82199			ST1214	97102	17	T7
AP2191	82199	24		ST1215	97102	17	T9
AP82199	82199			SW724	79727		
A004M2	30152	17	C1	S47X	28569	15	M1
A004M2	30152	17	C2	S47X	28569	15	M3
BP2143	82199			S48	28569	15	M2
BP2144	82199	15	T4	S48	28569	15	M4
B21204	82199			S626-36	75376		
CP21189	82199	14	B1	TJH15010J	14655	17	C9
CP2122	82199	15	S3	TS101P01	81349	18	XK1
CP21225	82199	15	S2	TS101P01	81349	18	XK3
CP21227	82199	15	S5	TS102P01	81349	18	XV2
CP21228	82199	15	S6	TS102P01	81349	18	XV3
CP21229	82199	15	S7	TS102P01	81349	18	XV4
CP21230	82199	15	S8	TS102P01	81349	18	XV5
CP21233	82199	15	S12	TS102U03	81349		EV1
CP21899	82199			TS102U03	81349		EV2
CP23729	82199	15	S10	TS102U33	81349		EV3
CP23733	82199	43	S9	TS102U03	81349		EV4
CP23734	82199	15	S11	T1060P26-5	71785		
CP54BIEF205V	81349	17	C3	X2810	76385		
CP54BIEF205V	81349	17	C4	10B	58474	15	T1
C0-03MGF-6-0360	81349	2	W9	1001	82389	15	S13
C113408	82199			102J30S	02660	18	XV1
C114560	82199			105-520	74970	43	J6
C146117	82199			115N060	70563	17	K1
EB22278	82199			1174	00614	15	K5
FL36-3LBB	41226			1174	00614	15	K6
HR	77764	15	R8	1177	00614	15	K7
JP21418	82199	17	L1	1177	00614	17	K4
JO313	44855	15	P1	118930B	78947	14	J1
K37501	75489			118930B	78947	14	J2
MS35489-33	76906			1306A115	70309	18	K2
MT281	83125	15	C9	16B	84438		
ND	78488	15	S4	1715	88245		P1

SECTION IV

TM11-6625-404-34P

REFERENCE NO.	MFR CODE	FIG. NO.	ITEM NO.	REFERENCE NO.	MFR CODE	FIG. NO.	ITEM NO.
2A66	40931	16	S15	601-23	75392	16	F1
2A66	40931	18	S14	736100-2	56232		
34G1043	75915	14	F1	744	82199		
3B29	75915	14	F2	7484	90002		
342003	79026	17	V1	7486	74545	18	J6
342003	75915		XF1	78-901	02660		
36002	75915		XF2	78A7P	02660		XW8
4L2FF	76489			78S3S	02660		XW7
413B	59875			78S3S	02660	14	XT3
462M1NFS	11242	43	P7	78S4S	02660	14	XT4
462M1NMS	01009			78S8T	02660		XW5
5J016000S	01009			80-837	72619	15	X14
5133S7M1	78277	17	K3	80206-5	72619	15	X14
6X4W	79136			86CPS4S	02660		
6X4W	81349	17	V2	86CP81	02660		P6
6X4W	81349	17	V3	8823K5	15605	15	S1
6X4W	81349	17	V4	8888	11242		
601-18	81349	17	V5	90SSL	01009		
601-23	75382	16	E3	95-937	72619		X11
	75382	15	E2	95408-937	72619		X11

By Order of the Secretary of the Army:

Official:

VERNE L BOWERS
Major General, United States Army
The Adjutant General

CREIGHTON W: ABRAMS
General, United States Army
Chief of Staff

Distribution:

Active Army:

USASA- (2)
C N G B (1)
ACSC-E (2)
USAARENBD (2)
USAMB (10)
AMC (1)
MICOM (2)
TECOM (2)
USASTRATCOM (4)
HISA (ECOM) (18)
CONARC (5)
ARADCOM (2)
ARADCOM Rgn (2)
OS Maj Comd (4)
LOGCOMD (5)
USACDCEC (5)
MDW (1)
Armies (2)
Corps (2)
Instl (2) except
 Ft Gordon (10)
 Ft Huachuca (10)
 Ft Carson (10)
Svc Colleges (2)
USASESS (5)

USAINTS (3)
USAADS (2)
USAFAS (2)
USAARMS (2)
USAIS (2)
USAES (2)
AD (2) except
 SAAD (30)
 LBAD (14)
 TOAD (14)
 ATAD (10)
 LEAD (7)
Gen Dep (2)
Sig Ser. Gen Dep (2)
Sig Dep (5)
MAAG (1)
WRAMC (1)
USARMIS (1)
USAERDAA (1)
USAERDAW (1)
Sig FLDMS (1)
Ft Richardson (ECOM Ofc) (2)
Units org **under fol TOE**: - 1 ea.
 11-158
 2-134
 29-136

NG: State AC (3): Units- Same as Active Army.

USAR: None.

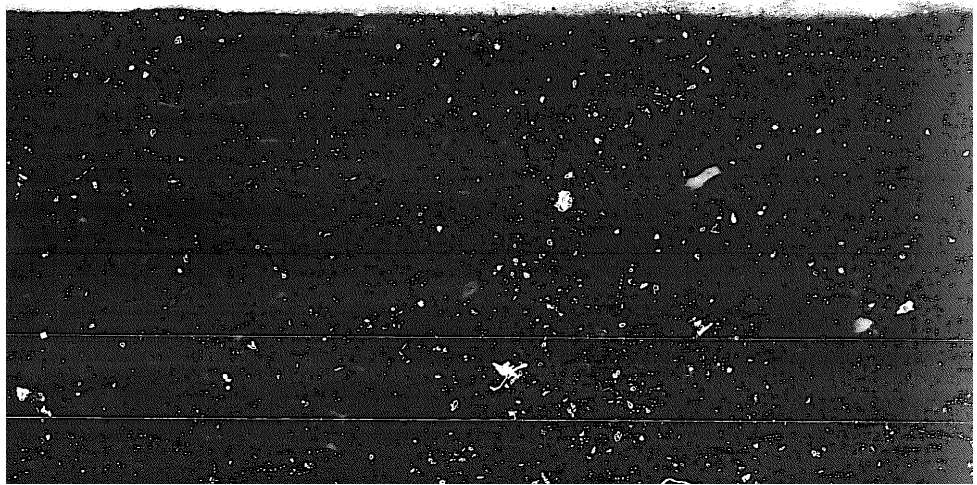
For **explanation** of abbreviations **used**, see AR 310-50.

END

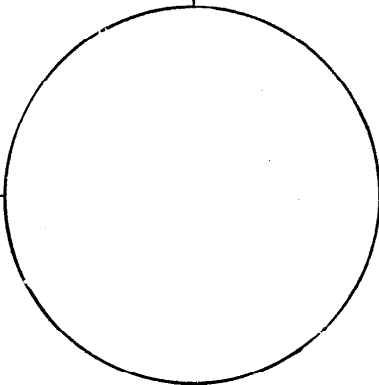
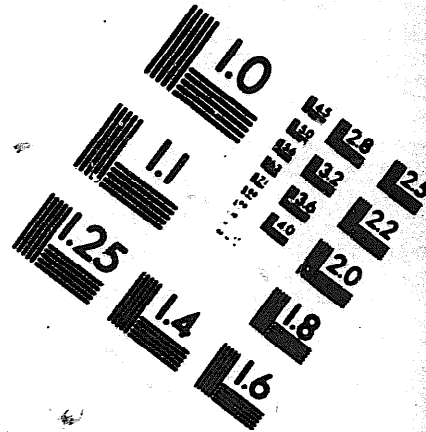
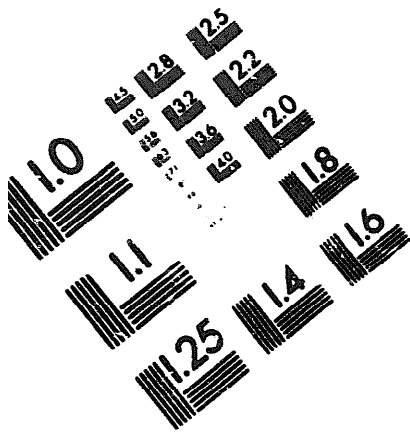
7-25-83

DATE





DEPARTMENT OF THE ARMY
MICROFORM
TEST TARGET



150 MM

1.0 mm (e= .81 mm)

ABCDEFGHIJKLMN OPQRSTU VWXYZ1234567890
abcdefghijklmnopqrstuvwxyz\$%&/'%# 1/2 1/4 —+ x&@*

1.5 mm (e= 1.09 mm)

ABCDEFGHIJKLMN OPQRSTU VWXYZ1234567890
abcdefghijklmnopqrstuvwxyz\$%&/'%# 1/2 1/4 —+ x&@*

2.0 mm (e= 1.37 mm)

ABCDEFGHIJKLMN OPQRSTU VWXYZ
abcdefghijklmnopqrstuvwxyz
1234567890\$%&/'%# 1/2 1/4 —+ x&@*

2.5 mm (e= 1.77 mm)

ABCDEFGHIJKLMN OPQRSTU VWXYZ
abcdefghijklmnopqrstuvwxyz
1234567890\$%&/'%# 1/2 1/4 —+ x&@*

1.0 mm (e= .81 mm)

ABCDEFGHIJKLMN OPQRSTU VWXYZ1234567890
abcdefghijklmnopqrstuvwxyz\$%&/'%# 1/2 1/4 —+ x&@*

1.5 mm (e= 1.09 mm)

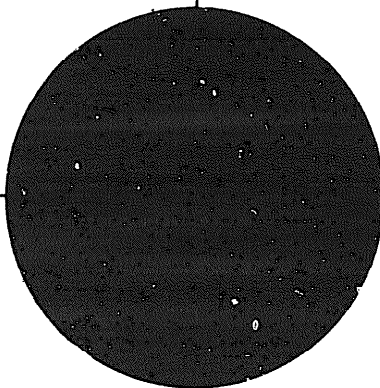
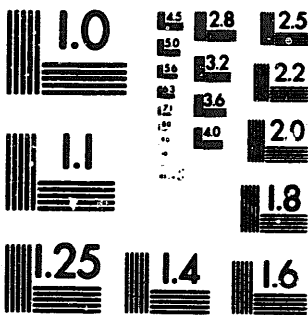
ABCDEFGHIJKLMN OPQRSTU VWXYZ1234567890
abcdefghijklmnopqrstuvwxyz\$%&/'%# 1/2 1/4 —+ x&@*

2.0 mm (e= 1.37 mm)

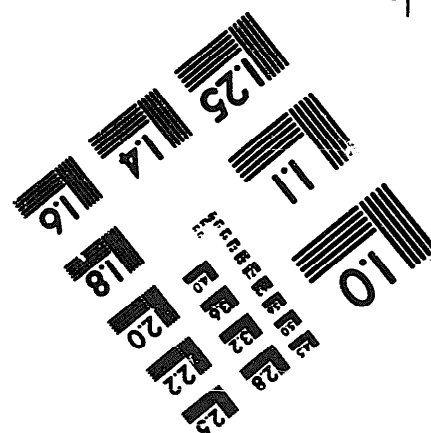
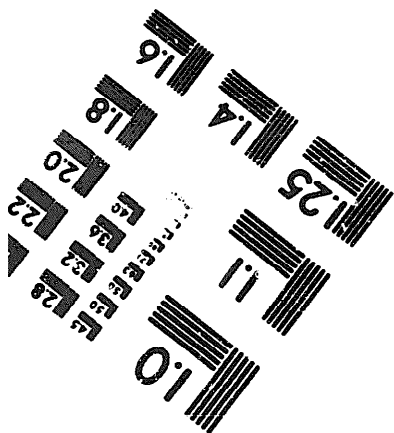
ABCDEFGHIJKLMN OPQRSTU VWXYZ
abcdefghijklmnopqrstuvwxyz
1234567890\$%&/'%# 1/2 1/4 —+ x&@*

2.5 mm (e= 1.77 mm)

ABCDEFGHIJKLMN OPQRSTU VWXYZ
abcdefghijklmnopqrstuvwxyz
1234567890\$%&/'%# 1/2 1/4 —+ x&@*



200 MM



250 MM